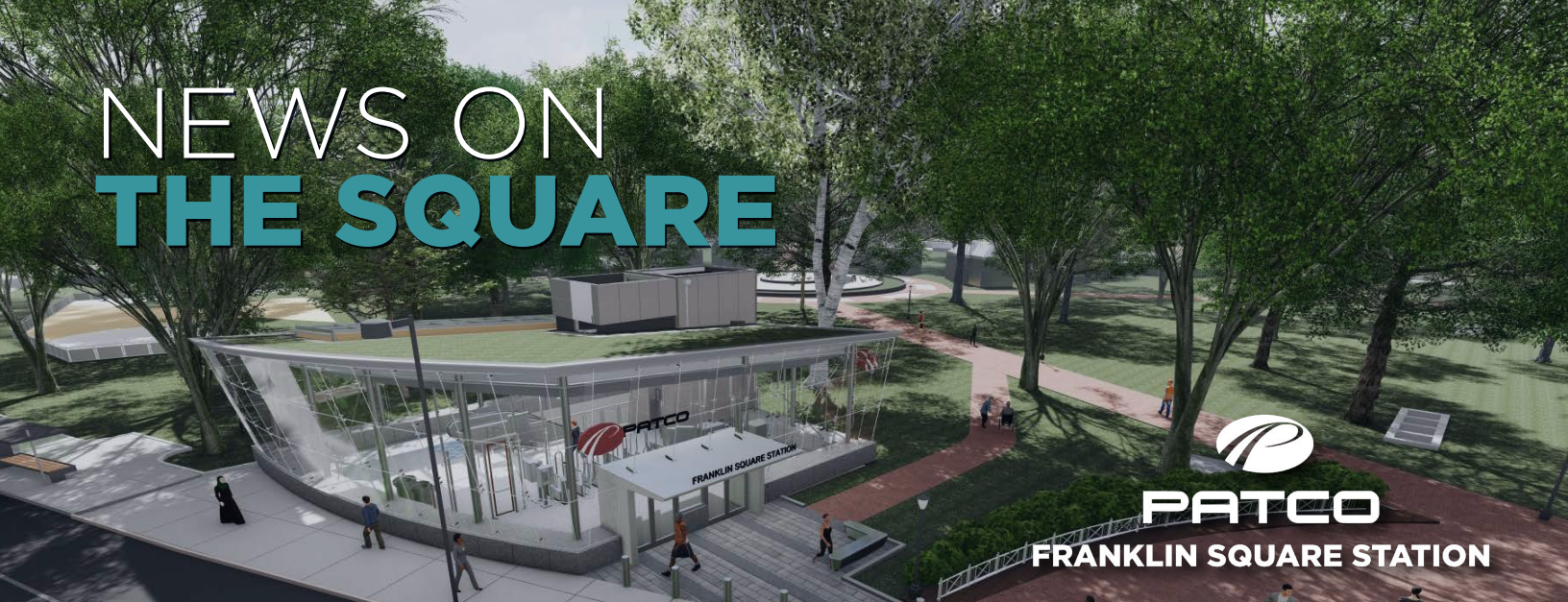


NEWS ON THE SQUARE



PATCO
FRANKLIN SQUARE STATION

DECEMBER 2023

WINTER IN THE SQUARE

There's No Place Like Franklin Square For The Holidays!

Kenneth W. Hanson
Senior Project Manager
HNTB CORPORATION

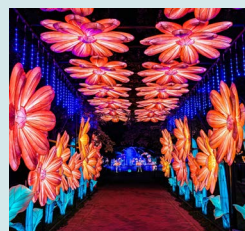
Welcome again to the Franklin Square newsletter. If you've been by the site lately, you'll know that so much has changed since the last newsletter. The concrete elevator shaft has been built and the steel structure that supports the entire station is going up around it. By the time you read this the roof will be installed. We are approaching an exciting time on the project as the emergency egress headhouses along 6th Street are nearing completion and everything is coming together on the main station building. As the holidays approach, Franklin Square Park will be decorated with thousands of colorful lights, and I can't wait until we can see those lights twinkling through the glass of the new Franklin Square Station. **Happy Holidays!**



SMALL FIRMS CONTRIBUTE IN A BIG WAY

DBE program benefits small businesses while helping to get things done.

Page 4



Page 6

CHINATOWN AND FRANKLIN SQUARE

Together they stand as a reminder of Philadelphia's diverse history and dynamic growth.



Page 8

WALKIN' THROUGH A WINTER WONDERLAND

The holiday season fills the park with lights and joy.



RidePATCO.org/projects



Facebook.com/RidePATCO

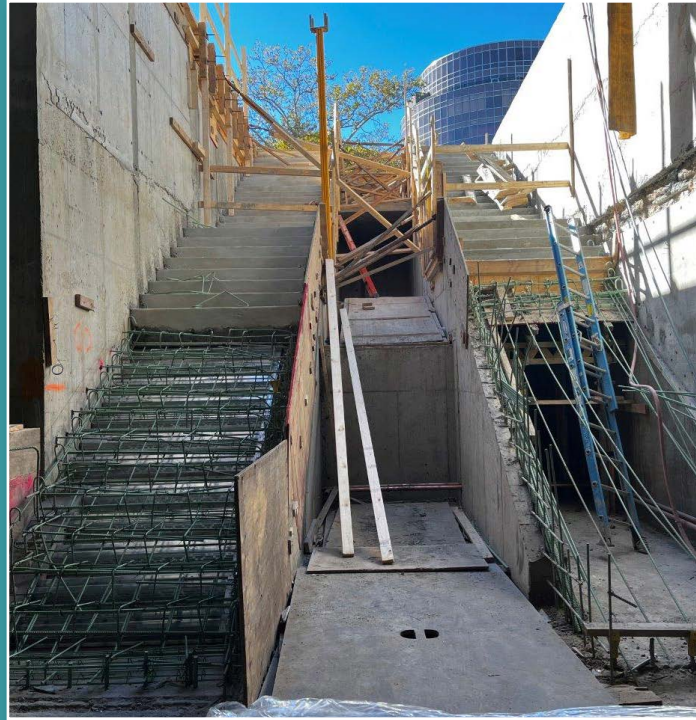


@RidePATCO



@RidePATCO

WHAT'S GOING ON BEHIND THE FENCE



Rebar and formwork for both staircases continues to be installed.



Final backfilling has been completed under the headhouse floor slab.

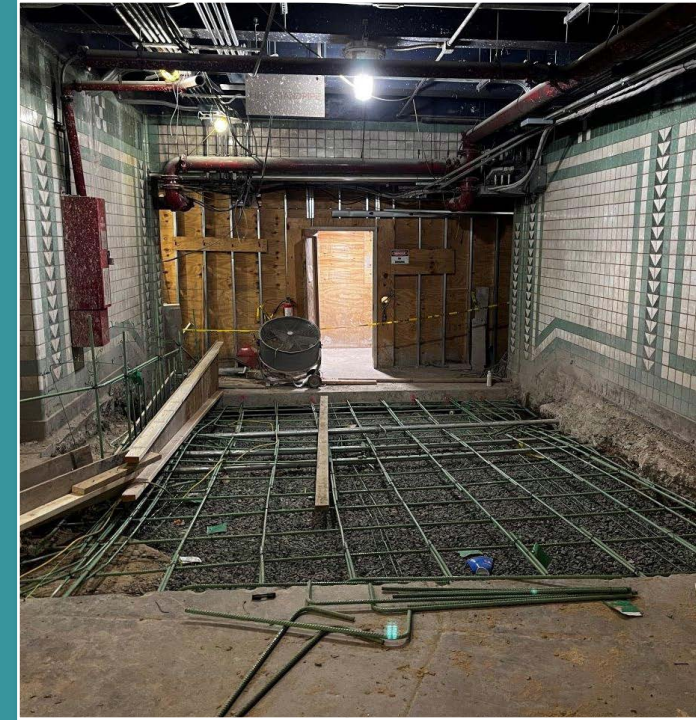


Concrete has been placed for the last segment of the elevator shaft.

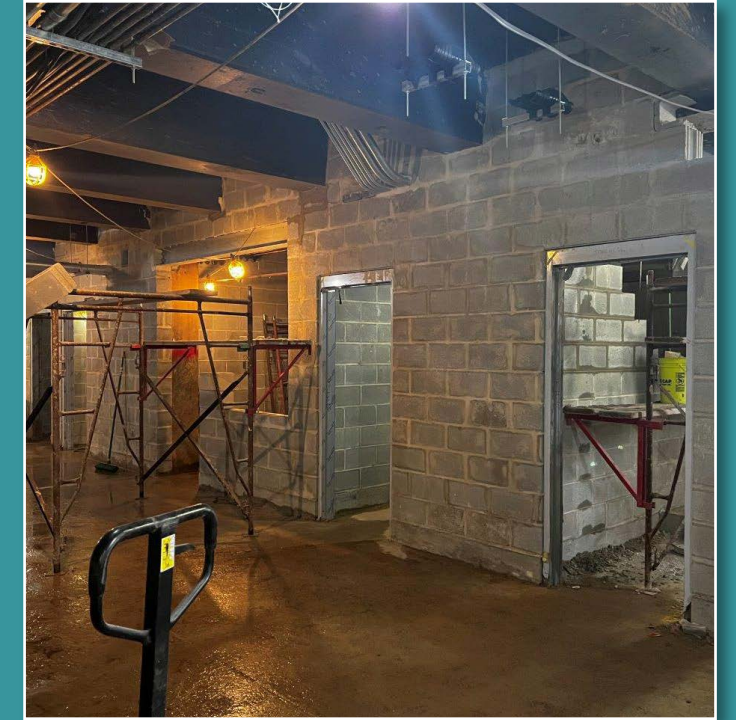


Structural steel for the headhouse is now substantially installed.

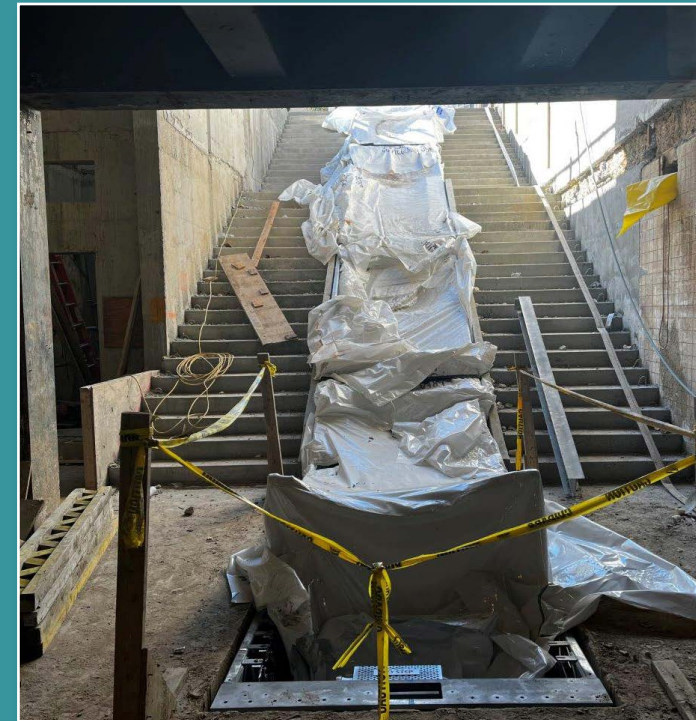
WHAT'S GOING ON BELOW THE GROUND



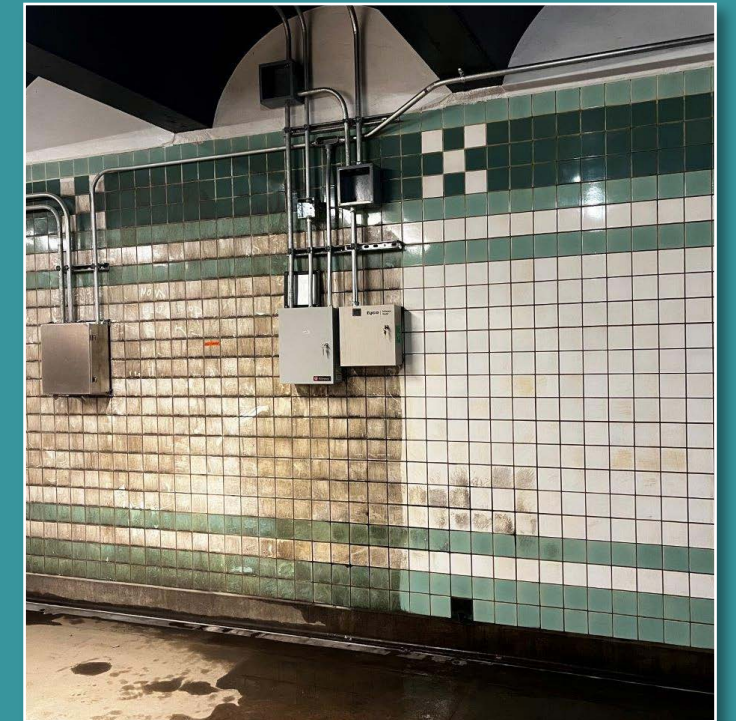
Rebar has been installed for the new ramp to the Track 2 platform.



Cinder block wall construction within the station concourse is under way.



The escalator is now in place.



Platform 1 existing wall tile cleaning is ongoing.

FEATURE STORY

CHINATOWN AND FRANKLIN SQUARE SHARE VIBRANT, COLORFUL HISTORY



Philadelphia's Chinatown is a testament to the enduring strength and cultural richness of a community that has faced its share of trials and tribulations. The neighborhood's origins trace back to the 1870s when Lee Fong established a laundry at 913 Race Street. Like many of his contemporaries, Lee Fong fled the anti-Chinese sentiment, racism, and violence prevalent in the American West. As Deborah Wei, a dedicated Philadelphia educator and community activist, notes, "Chinatowns have existed across the United States for nearly 200 years, created out of necessity by Chinese immigrants who retreated into self-contained districts in search of safety."

Despite this complex history, a vibrant and resilient community developed from these and many other challenges for the Chinatown community over the past several decades; "Chinese Americans slowly fashioned a life and a future as part of the diverse American tapestry. Chinatowns became havens of linguistic and cultural security and familiarity," Wei explains.

Just blocks away from Chinatown stands Franklin Square, founded by William Penn in 1682. While Chinatown is younger, the interplay between Franklin Square and the Chinatown neighborhood's modern history holds undeniable



significance. At its inception, the square was designed to provide a green oasis in the bustling city. Over time, Franklin Square has grown to become an integral part of the Chinatown community. It welcomes daily visits from school children and residents and hosts numerous community events.

Throughout the centuries, Franklin Square has adapted to a colorful array of purposes. The same holds true today. Since its inception in 2016, the Philadelphia Chinese Lantern Festival has become an essential part of Franklin Square's cultural landscape and the people of Chinatown. This festival transports visitors to an enchanting world of illuminated art, a vivid expression of

ancient Chinese tradition. It showcases the rich heritage of Chinese culture and fosters unity and community spirit, serving as a tangible example of the connection between the square and the residents of Chinatown and providing the opportunity for cross-cultural exchange and appreciation.

A testament to resilience, the robust relationship between Franklin Square and Chinatown forms a captivating blend of history, culture, and modernity. Together, they stand as a reminder of the enduring spirit of Philadelphia's diverse and dynamic communities and the capacity for remarkable growth in the midst of adversity.



DBE FIRMS ADD DIVERSITY, TALENT TO FRANKLIN SQUARE STATION PROJECT

In the bustling city of Philadelphia, transportation is king. From the crowded streets near Franklin Square, to the busy highways surrounding the metro area, getting around is a top priority for residents, visitors, and businesses. However, the road to success can be difficult for small or disadvantaged companies trying to break into the transportation industry. That's where the Disadvantaged Business Enterprise (DBE) program comes in.

The DBE program was created by the US Department of Transportation to assist small and disadvantaged businesses in obtaining contracts and subcontracts on federally funded transportation projects. For the Franklin Square Station upgrades, the program is administered by the Delaware River Port Authority (DRPA). DRPA has steadily worked towards increasing its utilization of disadvantaged businesses over the years, setting forth an aggressive goal of 16% as approved by the Federal Transit Administration (FTA) for FY 2023-2025.

For small or disadvantaged companies, the DBE program can be a game-changer. It levels the playing field and allows them to compete for contracts they might not have had access to. Often, small or disadvantaged companies face stiff competition from larger established companies. However, disadvantaged companies receive valuable technical assistance and support from the DBE program, which helps underprivileged businesses develop the skills and expertise they need to compete in the industry.

But the DBE program doesn't just benefit individual companies - it also helps to promote diversity and inclusion in the transportation industry. By providing opportunities for small and disadvantaged businesses, the program helps to break down barriers and create a more equitable playing field. And for cities like Philadelphia, that means a more diverse and vibrant economy that accurately reflects the unique makeup of our region.

For Franklin Square Station, the goals of this project are to re-establish this historical station and integrate the station into the existing community and park, as well as enhance the customer experience, improve infrastructure, serve the community by reducing congestion in the area, increase access to an area traditionally underserved by public transportation, and stimulate economic growth and employment opportunities. Below are the DBEs that are helping us reach those goals:

“ DBEs are providing everything from architectural metal panels to the writing, graphic design and production of this newsletter, said Kenneth Hanson, senior project manager for HNTB. Without our DBEs we wouldn't have the rich diversity of talent on this project. ”

SUBCONTRACTORS

Lake Glenn Enterprises Inc.
Torrado Construction Company
HiTech Services
HK Panel Systems

SUBCONSULTANTS

Quest Corporation
Envision Consultants, Ltd.
Navarro & Wright Consulting Engineers, Inc.
Hunt Engineering Company
Garg Consulting Services

WINTER EVENTS AT FRANKLIN SQUARE

Franklin Square is steeped in history and brimming with Winter fun for everyone. Bordering Philadelphia's Historic District and the Old City and Chinatown neighborhoods, the park offers visitors and residents seven acres of tranquil nature, all centered around the beautiful fountain, which was built in 1838. For information visit www.historicphiladelphia.org/franklin-square.

FEATURED EVENTS

Winter in Franklin Square

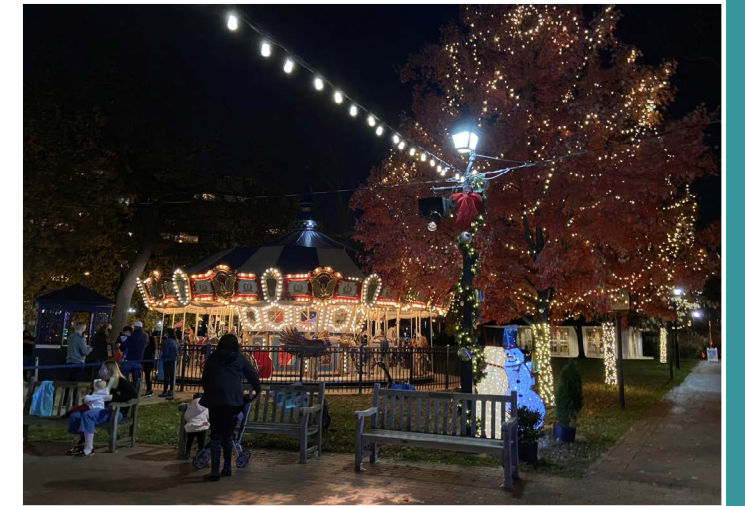
November 16, 2023 - February 25, 2024

Historic Philadelphia, Inc. (HPI) the non-profit organization that manages and operates Franklin Square has transformed the Square into a winter wonderland beginning November 16. While visiting Franklin Square, you can enjoy the dazzling Electrical Spectacle Light Show presented by PECO, Chilly Philly Mini Golf, Street Curling and delicious seasonal food and cocktails from the Ben On the Rocks heated tent. **The Electrical Spectacle Light Show** is a Franklin Square tradition with hundreds of thousands of lights choreographed to your favorite holiday tunes including *All I Want For Christmas Is You*, *Feliz Navidad*, and *Carols Of The Bells* through January 10. On January 11, the musical selection will change to *'Winter Wonderland.'* The Electrical Spectacle show begins at 5 p.m. daily and runs every 30 minutes until 9 p.m., weather permitting.

“Historic Philadelphia, Inc. Is excited to celebrate the holidays and welcome visitors and residents from across the Greater Philadelphia region to Franklin Square's free holiday light show,” said President and CEO of Historic Philadelphia, Inc. Amy Needle.

Chilly Philly Mini Golf features 18 holes of wintery fun and can be played both day and night. The golf course features lights, seasonal music and winter-time friends throughout the course. The course features reproductions of Philadelphia icons and landmarks. Cost is \$15 for adults and \$12 for children.

Street Curling gives aspiring Olympians (or people who just want to have fun) the opportunity to experience this outdoor sport on one of two



curling rinks featuring synthetic ice. Street Curling is played on an elevated platform where two teams take turns sliding stones across the curling surface toward the target. 'Curling' refers to the rotational spin of the curling stone, which causes it to take a curved path. Groups of eight can compete under the lights for a 30-minute session for \$40 per session. The Street Curling Rink is located next to Ben on the Rocks heated tent.

Ben On the Rocks operates nightly beginning at 5 p.m. through January 7, serving a variety of cocktails, classic and spiked hot chocolate, seasonal beer, and wine. The heated tent is open nightly with s'mores, cookie decorating, and apple cider doughnuts. The tent is surrounded by fire pits and opportunities for outdoor seating as well.

Jingle and Mingle with Santa presented by Customers Bank

December 23, 5:30 - 7:30 p.m.

Santa will appear at the Franklin Square Fountain and will pose for elfie-selfies. Free!

Kwanzaa Celebration and Evening Bazaar

December 29, 5:30 - 7:30 p.m.

On the fourth day of Kwanzaa, the African American Museum in Philadelphia will host a family friendly market experience featuring Black-owned vendors from across the region with gifts for the holiday season. The celebration will include a Kwanzaa-themed quizzo, food trucks and music.

Kids' New Year's Eve Countdown

December 31, 2023

Ring in the New Year with a family friendly celebration. Enjoy crafts and festivities with the annual Square Drop at 6 p.m. Also, enjoy the New Year's Eve Fireworks on the Waterfront, which are viewable from the Square. Franklin Square will close at 8 p.m. on New Year's Eve.



WHAT'S HAPPENING NEXT?

It may be winter outside but there's a lot going on both inside and outside the station. If you look behind the construction fence, you'll see roof and glass wall installation on the Main Headhouse and the 6th Street Emergency Egress Headhouses. We'll also be installing the green roofing materials and performing some landscaping and tree planting.

We're making progress with the escalators and elevators as well. We're finalizing the escalator installation and constructing the elevator car and internal working gears.

On the platform we're working on installing the drainage system, cleaning the historic tiles, and final fit and finishes.

And while we're all taking a minute to look around and enjoy this beautiful holiday season, we're certainly keeping busy with the ongoing construction.



INQUIRER UPDATES READERS ON STATION PROJECT

The Philadelphia Inquirer recently wrote about the reopening of the Franklin Square Station, focusing on the history of the station and the efforts to keep that historic look and feel.

Read the Philadelphia Inquirer story here:

<https://www.thefranklinsquarestation.com/wp-content/uploads/2023-12-01-Inquirer-Article-online-Franklin-Square-PATCO-station-article.pdf>

FOR FURTHER INFORMATION:

✉ info@thefranklinsquarestation.com

☎ 856-567-3772

🌐 thefranklinsquarestation.com

 Facebook.com/RidePATCO

 @RidePATCO

 @RidePATCO

 linkedin.com/company/ridepatco